



A Cut Above

極致享受

要體驗最豪華的享受，總統套房往往是人們的不二之選。當你身處於港景匯總統套房的高樓處，往窗外望去就是西環至維港一帶的無敵海景，再一回眸，房內則是豪華得令人心顫目眩的佈置。這時，即使用「奢華」、「浪漫」、「尊貴」、「溫馨」、「時尚」、「典雅」、「舒適」之類字眼來形容這間總統套房，你都會覺得不夠貼切。

Taking luxury further once more, the leading Sun Hung Kai Properties have set the new benchmark for hedonism with this exquisite Presidential Suite, located in the stunning development of The HarbourView Place that just opened last year.



Text by Yuki Lam & Billy Clarke
Photography by Sanders Wong



位 於九龍站地鐵上蓋的服務式住宅「港景匯」，旁邊正是全球第三高的甲級商廈環球貿易廣場(ICC)、高級購物商場ELEMENTS，樓下則是Hong Kong W Hotel，單就地理位置而言已見其氣派非凡，而這次介紹的總統套房位於天璽第二座的70樓，面積逾2,500方呎，客人可在此居高臨下，飽覽維港兩岸的迷人景致。

東方氣派 古今韻味

甫入房間，玄關位擺放了多件象徵東方貴族的擺設，為尊貴的總統生活揭開「序幕」。深色的花崗岩石、赤褐色木地板、精雕細琢的牆柱，都為套房增添了不少東方色彩。室內的色調揉合了深刻的紫紅、赤褐、深紅及白色，給人優雅低調的感覺，帶出總統套房的豪華格調。

客廳及睡房區域皆鋪上了區域地毯，色彩繽紛的波浪紋圖案具有延伸視覺的效果，又給人溫暖舒適的感覺。客廳電視背牆的黑色馬賽克磚牆，既與牆身的格子牆飾互為呼應，又與上方的嵌入式格子天花相映成趣，表現幾何圖案的型格味道，而除了大堂玄關外，套房多處也擺放了多件藝術品，例如大廳及睡房牆上的火花攝影圖片，大大提升了整體品味。

設備完善 一應俱全

這間由國際知名設計公司Design Studio SPIN打造的總統套房，除主人房外，有衣帽間、客房、書房連臥椅、客廳、飯廳、廚房及洗衣房等，設備相當完善。全屋均安裝了電子窗簾，住客可隨時隨地可享受自然光及欣賞戶外景色。在客廳，裝設了Bang & Olufsen (B&O) 50吋高

Left Page左頁/ 廳電視背牆的黑色馬賽克磚牆，既與牆身的格子牆飾互為呼應，又與上方的嵌入式格子天花相映成趣。
Eng.
Above上圖/ 套房採用開放式的設計，加上開揚的景觀，使室內的空間感大增。
Eng.



清等離子電視，連接同系DVD播放機及音響設備，配合Lutron燈光調節的不同燈光效果，為尊貴的客人在視覺、聽覺及氣氛上帶來「總統式」的享受。

忙碌的工作過後，最好是可以享受溫暖的按摩浴。主人房的浴室裝置了按摩浴缸及液晶電視，讓住客可以一邊享受水療按摩，一邊欣賞電視節目。廚房以日式風情的設計為主，開放式廚房款客親切又大方，而電器用品選用了德國的Miele及美國Sub-Zero等國際品牌，又有Siemens的咖啡機、熱水壺、多士爐，以及其他廚具用品等，令客人仿佛有「另一個家」的感覺。

在建築、設計、地點上都別樹一格的「港景匯」，既能滿足優越尊貴的生活要求，又能符合都市人忙碌的生活實際需要，實在非常適合嚮往豪宅生活的人士長期租住。



1/ 玄關位擺放了多件象徵東方貴族的擺設，配合柔和的燈光、雲石地磚，為尊貴的總統生活揭開「序幕」。
Eng.

2/ 客廳裝設了Bang & Olufsen (B&O) 50吋高清等離子電視，連接同系DVD播放機及音響設備，配合Lutron燈光調節的不同燈光效果，為尊貴的客人在視覺、聽覺及氣氛上帶來「總統式」的享受。
Eng.

3/ 廚房電器用品選用了德國的Miele及美國Sub-Zero等國際品牌，又有Siemens的咖啡機、熱水壺、多士爐，設備相當完善。
Eng.



Information:

Information: Hok Lok Yuen (康樂園)
Size: 2,000 sq. ft. (Interior)



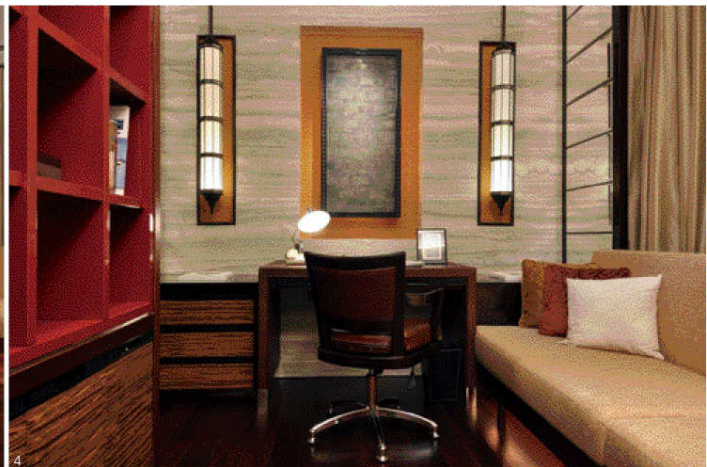


Located next to the third tallest building in the world and above one of the most luxurious shopping malls in Hong Kong, The HarbourView Place is worlds apart from your average serviced accommodation — and not just in terms of elevation. Located on the 50th to 70th floors of The Cullinan II at the International Commerce Centre (ICC) complex, The HarbourView Place contains a total of 266 premium suites and this particular suite is the pick of the bunch, with the 70th floor penthouse featuring exclusive views, faultless decor by the team from Design Studio SPIN, plus a fine selection of materials and top-quality branded furnishings.

Everlasting Luxe

With up to 2,500 square-feet of floor space, this Presidential Suite is already bigger than most standalone houses, and the generously-sized space features a

master bedroom suite, a guest bedroom, a study room complete with a daybed, a living and dining area, plus an open-style kitchenette and a laundry room. However, with 2,500 square-feet of superior luxury, the suite is much more than just a bunch of specifications, and it comes complete with an eye-catching interior by the Tokyo-based team from Design Studio SPIN. The result is a contemporarily oriental interior, sprinkled with plenty of marble and other modish materials. At the entrance of the home one is greeted by an atmospheric foyer, stylishly decked out with metallic dragon sculptures, illuminated from behind by spotlights that shine onto red shades. Further in the main dragon sculpture marks the start of the corridor - with the bedrooms, study and laundry located off on the left; and the living and dining room located on the right. As with the foyer, more touches of orientalism appear



in the living room, with the open-plan space enhanced with deep granite marble, polished wall columns and russet wooden floor panels. Edging off on the side of the lounge is the dining and kitchenette area, with these spaces covered by marble panels and illuminated by site-specific spotlights. While the dining area appears slightly formal and decorous, the living room is cushier and more inviting, with velvet cushions on the sofa, a pleasantly curvy-patterned carpet, an interesting light fixture and other appealing oriental decorations adding warmth. Some other louder attractions also prettify the area, with gently-sloping pyramid tiles enhancing the ceiling, illuminated glass display cabinets catching the eye from behind the sofa and a grey-brick wall standing out behind the 65-inch Bang & Olufsen plasma screen television. Some of the other modernisms in the living

room include an electronic curtain control system, a Lutron light dimming scheme, plus a Siemens/Porsche Design coffee maker, kettle and toaster in the kitchen.

Informal Elegance

Off from the back of the living room is the study area, which also has an entrance from the other side of the corridor. The two entrances open up the space of the room and give the front of the apartment a sense of fluidity. This fluidity also appears in the design scheme of the study, with more oriental motifs appearing on the lights and the red shelf, and an interesting framed ornament which corresponds with the wall of the behind the television back in the lounge. Further down the corridor, there is an individual powder room, plus a laundry room complete with lavatory. At the end of the corridor the two bedrooms come in as the main highlights of the home,

with both featuring a similar design scheme. While the secondary bedroom features warm wood and luscious red and gold tones, the master bedroom features a brighter and more uplifting design scheme. The other differences include the fittings of course, with the master bedroom featuring a walk-in-closet and a swanky en-suite bathroom complete with a Jacuzzi, massage jets, a rain shower and an LCD television. Innovative and modish at the same time, it is touches like these that give this Presidential Suite its outstanding exceptionality. ♡

1/ 主人房用了Pillow Top Sealy的高級床褥，床身又大又軟。
Eng.

3&4/ 書房的格調以清新雅緻為主，雲石馬賽克牆飾及木紋傢俱帶出自然之趣，房內又設有臥床，看書看得累了也可小休一會。
Eng.